

Recommended Accommodation Near The Woods at Oakley

Marshwood Farmhouse B&B – Dinton



Accommodation: 1 family room (sleeps up to 4), 1 double room (sleeps up to 2), 1 self-catering cottage (sleeps up to 4) and 2 shepherds huts (each one sleeps up to 2).
Minimum Stay: 2 nights in the B&B, 3 nights in the cottage and 2 nights in the shepherds huts (can be 1 night on request).
Distance From The Woods at Oakley: 0.7 Miles (3 minute drive).
Parking: Yes.
Pets Allowed: No.

Marshwood Farm Camping – Dinton



Accommodation: 3 bell tents (sleep up to 4 each), 5 grass pitches (to pitch 1 tent for 2 people).
Minimum Stay: 2 nights in the bell tents and 1 night on the pitches.
Distance From The Woods at Oakley: 0.7 Miles (3 minute drive).
Parking: Yes.
Pets Allowed: No.

Honeysuckle Homestead B&B – Dinton



Accommodation: a selection of double rooms (sleeps up to 2) and family rooms (sleeps up to 4).
Minimum Stay: 1 night.
Distance From The Woods at Oakley: 2.2 Miles (5 minute drive).
Parking: Yes.
Pets Allowed: Allowed on request and may be charged.

Self-Contained Apartment – Dinton



Accommodation: 1 double bedroom (sleeps up to 2).
Minimum Stay: 2 nights.
Distance From The Woods at Oakley: 1.2 Miles (4 minute drive).
Parking: Yes.
Pets Allowed: No.

Cosy Country Loft Annexe - Teffont



Accommodation: 1 king sized bedroom (sleeps up to 2).
Minimum Stay: 2 nights.
Distance From The Woods at Oakley: 1.5 Miles (7 minute drive).
Parking: Yes.
Pets Allowed: Small/medium sized dogs. £15 per dog/per night.

Private Annexe – Chilmark



Accommodation: 1 king sized bedroom (sleeps up to 2).
Minimum Stay: 1 night.
Distance From The Woods at Oakley: 2.4 Miles (10 minute drive).
Parking: Yes.
Pets Allowed: No.

Garden Studio Cottage – Teffont



Accommodation: 1 king sized bedroom (sleeps up to 2).
Minimum Stay: 2 nights.
Distance From The Woods at Oakley: 2.2 Miles (9 minute drive).
Parking: Yes.
Pets Allowed: No.

Mill House Snug – Wyllye



Accommodation: 1 king sized bedroom (sleeps up to 2).
Minimum Stay: 2 nights.
Distance From The Woods at Oakley: 2.8 Miles (10 minute drive).
Parking: Yes.
Pets Allowed: No.

The Barford Inn - Barford St Martin



Accommodation: 3 double bedrooms and 1 twin bedroom (each room sleeps up to 2).
Minimum Stay: 1 night.
Distance From The Woods at Oakley: 3.4 Miles (10 minute drive).
Parking: Yes.
Pets allowed: No.

The Compasses Inn - Lower Chicks Grove



Accommodation: 3 double bedrooms, 1 family room and Plum Cottage (sleeps up to 4).
Minimum Stay: 1 night.
Distance From The Woods at Oakley: 3.1 Miles (11 minute drive).
Parking: Yes.
Pets allowed: Yes.

Manor Farm Holiday Cottages – Teffont



Accommodation: The Garrett (sleeps up to 4), Stable Cottage (sleeps up to 4) and The Dovecot (sleeps up to 4).
Minimum Stay: 2 nights in The Garrett, 5 nights in Stable Cottage and 3 nights in The Dovecot.
Distance From The Woods at Oakley: 2.5 Miles (12 minute drive).
Parking: Yes.
Pets Allowed: Yes.

Glebe House (Entire Home)- Barford St Martin



Accommodation: 1 king sized and single bedroom, 1 king sized bedroom, 1 small double bedroom, 1 bedroom with 3 single beds (sleeps up to 10).
Minimum Stay: 3 nights.
Distance From The Woods at Oakley: 3.4 Miles (12 minute drive).
Parking: Yes.
Pets Allowed: Well behaved pets considered. £25 per pet charge for cleaning.

The Hall Guest House Annexe - Barford St Martin



Accommodation: 1 king sized bedroom and 1 double bedroom (sleeps up to 4).
Minimum Stay: 2 nights.
Distance From The Woods at Oakley: 3.4 Miles (12 minute drive)
Parking: Yes.
Pets Allowed: No.

Burcombe Manor B&B – Burcombe



Accommodation: 1 double bedroom, 1 twin room and 1 family room (each room sleeps up to 2, with a cot available on request in the family room).
Minimum Stay: 1 night.
Distance From The Woods at Oakley: 5.6 Miles (12 minute drive).
Parking: Yes.
Pets Allowed: No.

Bird and Carter B&B – Fonthill



Accommodation: 2 double bedrooms (each sleep up to 2), 1 king sized bedroom (sleeps up to 2) and 1 suite (sleeps up to 4).
Minimum Stay: 1 night.
Distance From The Woods at Oakley: 5.8 Miles (13 minute drive).
Parking: Yes.
Pets Allowed: Yes (small charge applies).

The Retreat (Entire Cottage) – Fovant



Accommodation: 2 king sized bedrooms, 1 twin bedroom and 1 sofa bed (sleeps up to 8).
Minimum Stay: 3 nights.
Distance From The Woods at Oakley: 3.9 Miles (14 minute drive).
Parking: Yes.
Pets Allowed: Yes.

[The Greyhound Inn B&B– Wilton](#)



Accommodation: 4 double bedrooms, 1 king sized bedroom and 1 apartment with a double bedroom and a twin bedroom.
Minimum Stay: 1 night.
Distance From The Woods at Oakley: 7.0 Miles (14 minute drive).
Parking: Street parking outside.
Pets Allowed: No.

[The Pembroke Arms B&B – Wilton](#)



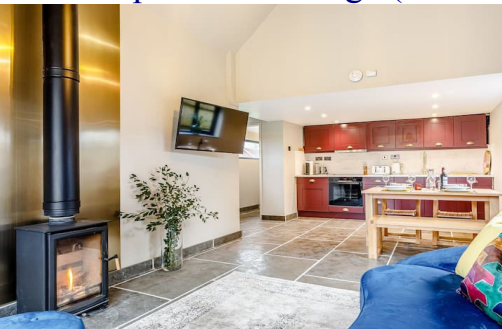
Accommodation: 2 king sized bedrooms, 3 super-king sized bedrooms, 1 twin bedroom, 2 triple rooms with a super-king and a single bed and 1 family room with 2 double beds.
Minimum Stay: 1 night.
Distance From The Woods at Oakley: 7.1 Miles (15 minute drive).
Parking: Yes.
Pets Allowed: No.

[Detached Barn Annexe - Sutton Mandeville](#)



Accommodation: 1 double bedroom and 1 bedroom with bunkbeds (sleeps up to 4).
Minimum Stay: 2 nights.
Distance From The Woods at Oakley: 4.4 Miles (15 minute drive).
Parking: Yes.
Pets Allowed: Yes.

[The Telephone Exchange \(Entire Cottage\) – Codford](#)



Accommodation: 1 king sized bedroom and 1 twin bedroom (sleeps up to 4).
Minimum stay: 2 nights.
Distance From The Woods at Oakley: 5.1 Miles (15 minute drive).
Parking: Yes.
Pets Allowed: Yes (maximum 1).

The Royal Oak Hotel – Swallowcliffe



Accommodation: 3 double bedrooms, 1 super-king bedroom, 1 twin bedroom with a sofa bed, 1 super-king bedroom with a large beanbag bed for 2.

Minimum Stay: 1 night.

Distance From The Woods at Oakley: 6.9 Miles (15 minute drive).

Parking: Yes.

Pets Allowed: Yes (£15 per dog).

Stonehenge Campsite



Accommodation: Private camping and glamping.

Minimum Stay: 1 night.

Distance From The Woods at Oakley: 8 Miles (15 minute drive).

Parking: Yes.

Pets Allowed: Yes but not in the glamping pods.